

## Original Paper

# Hospital Epidemics Tracker (HEpiTracker): Description and Pilot Study of a Mobile App to Track COVID-19 in Hospital Workers

Joan B Soriano<sup>1,2</sup>, MD; Esteve Fernández<sup>2,3,4,5</sup>, MD; Álvaro de Astorza<sup>6</sup>, MD; Luis A Pérez de Llano<sup>7</sup>, MD; Alberto Fernández-Villar<sup>8</sup>, MD; Dolors Carnicer-Pont<sup>2,3,4,5</sup>, MD; Bernardino Alcázar-Navarrete<sup>2,9</sup>, MD; Arturo García<sup>10</sup>, BSc; Aurelio Morales<sup>10</sup>, BSc; María Lobo<sup>10</sup>, BSc; Marcos Maroto<sup>10</sup>, BSc; Eloy Ferreras<sup>10</sup>, BSc; Cecilia Soriano<sup>11</sup>, PhD; Carlos Del Rio-Bermudez<sup>12</sup>, PhD; Lorena Vega-Piris<sup>13</sup>, BSc; Xavier Basagaña<sup>14</sup>, PhD; Josep Muncunill<sup>15</sup>, BSc; Borja G Cosío<sup>2,15,16</sup>, MD; Sara Lumbreras<sup>17</sup>, PhD; Carlos Catalina<sup>18</sup>, BSc; José María Alzaga<sup>18</sup>, BSc; David Gómez Quilón<sup>18</sup>, BSc; Carlos Alberto Valdivia<sup>18</sup>, BSc; Celia de Lara<sup>18</sup>, BSc; Julio Ancochea<sup>1,2</sup>, MD

<sup>1</sup>Hospital Universitario La Princesa, Universidad Autónoma de Madrid, Madrid, Spain

<sup>2</sup>Centro de Investigación en Red de Enfermedades Respiratorias (CIBERES), Instituto de Salud Carlos III (ISCIII), Madrid, Spain

<sup>3</sup>Unidad de Control del Tabaco, Centro Colaborador de la OMS para el Control del Tabaco, Institut Català d'Oncologia-ICO, Hospitalet de Llobregat, Barcelona, Spain

<sup>4</sup>Grupo de Control y Prevención del Cáncer, Institut d'Investigació Biomèdica de Bellvitge-IDIBELL, Hospitalet de Llobregat, Barcelona, Spain

<sup>5</sup>Departamento de Ciencias Clínicas, Facultad de Medicina, Universitat de Barcelona, Hospitalet de Llobregat, Barcelona, Spain

<sup>6</sup>Servicio de Neumología, Hospital de Can Misses, Ibiza, Spain

<sup>7</sup>Servicio de Neumología, Hospital Lucus Augusti, Lugo, Spain

<sup>8</sup>Servicio de Neumología, Hospital Álvaro Cunqueiro, Vigo, Spain

<sup>9</sup>Servicio de Neumología, Hospital de Alta Resolución de Loja, Loja, Spain

<sup>10</sup>Fundación Teófilo Hernando, Madrid, Spain

<sup>11</sup>CIMNE - International Center for Numerical Methods in Engineering, Barcelona, Spain

<sup>12</sup>SAVANA Med, Madrid, Spain

<sup>13</sup>Unidad de Metodología, IIS del Hospital Universitario La Princesa, Madrid, Spain

<sup>14</sup>ISGlobal, Universitat Pompeu Fabra, Barcelona, Spain

<sup>15</sup>IdISBa, Palma, Spain

<sup>16</sup>Servicio de Neumología, Hospital Universitari Son Espases, Palma, Spain

<sup>17</sup>Institute for Research in Technology, Universidad Pontificia Comillas, Madrid, Spain

<sup>18</sup>ASELCIS Consulting, Madrid, Spain

## Corresponding Author:

Joan B Soriano, MD

Hospital Universitario La Princesa

Universidad Autónoma de Madrid

Planta 6, Servicio de Neumología

Diego de León 62

Madrid, 28006

Spain

Phone: +34 915202200

Email: [jbsoriano2@gmail.com](mailto:jbsoriano2@gmail.com)

## Abstract

**Background:** Hospital workers have been the most frequently and severely affected professional group during the COVID-19 pandemic, and have a big impact on transmission. In this context, innovative tools are required to measure the symptoms compatible with COVID-19, the spread of infection, and testing capabilities within hospitals in real time.

**Objective:** We aimed to develop and test an effective and user-friendly tool to identify and track symptoms compatible with COVID-19 in hospital workers.

**Methods:** We developed and pilot tested Hospital Epidemics Tracker (HEpiTracker), a newly designed app to track the spread of COVID-19 among hospital workers. Hospital staff in 9 hospital centers across 5 Spanish regions (Andalusia, Balearics, Catalonia, Galicia, and Madrid) were invited to download the app on their phones and to register their daily body temperature, COVID-19-compatible symptoms, and general health score, as well as any polymerase chain reaction and serological test results.

**Results:** A total of 477 hospital staff participated in the study between April 8 and June 2, 2020. Of note, both health-related (n=329) and non-health-related (n=148) professionals participated in the study; over two-thirds of participants (68.8%) were health workers (43.4% physicians and 25.4% nurses), while the proportion of non-health-related workers by center ranged from 40% to 85%. Most participants were female (n=323, 67.5%), with a mean age of 45.4 years (SD 10.6). Regarding smoking habits, 13.0% and 34.2% of participants were current or former smokers, respectively. The daily reporting of symptoms was highly variable across participating hospitals; although we observed a decline in adherence after an initial participation peak in some hospitals, other sites were characterized by low participation rates throughout the study period.

**Conclusions:** HEpiTracker is an already available tool to monitor COVID-19 and other infectious diseases in hospital workers. This tool has already been tested in real conditions. HEpiTracker is available in Spanish, Portuguese, and English. It has the potential to become a customized asset to be used in future COVID-19 pandemic waves and other environments.

**Trial Registration:** ClinicalTrials.gov NCT04326400; <https://clinicaltrials.gov/ct2/show/NCT04326400>

(*JMIR Public Health Surveill* 2020;6(3):e21653) doi: [10.2196/21653](https://doi.org/10.2196/21653)

## KEYWORDS

app; COVID-19; coronavirus; e-medicine; monitoring; symptoms; surveillance

## Introduction

The rapid spread of severe acute respiratory syndrome coronavirus 2 (SARS-CoV-2), the virus responsible for COVID-19, requires an urgent, collaborative, and multidisciplinary response supported by innovative methods [1]. Hospital staff (including both health-related and non-health-related professionals) form the backbone of the response to the ongoing pandemic. However, these professionals are among the most frequently and severely affected by COVID-19 [2,3]. Indeed, the disease has had a tremendous impact on the hospital workforce of affected areas due to the high risk of infection and heavy workloads. The dissemination of SARS-CoV-2 within hospitals may result in large nosocomial outbreaks and other devastating consequences. In the current scenario, timely information on how these risks evolve and are managed is almost anecdotal and reliable scientific data are urgently needed. In addition, understanding the determinants of SARS-CoV-2 infection and transmission by individuals with asymptomatic or very mild symptomatic cases of COVID-19 is crucial for the design of containment strategies.

In August 2020, the World Health Organization (WHO) declared that the COVID-19 pandemic is far from controlled. The cumulative number of confirmed COVID-19 cases across 216 countries, areas, or territories worldwide amounts to over 21,989,366, and 775,893 confirmed deaths have been reported to date [4]. Record daily numbers of both infections and deaths are seen in many countries, with many of them already experiencing “second waves” after lockdowns were lifted [5]. Spain is among the countries hardest hit by the pandemic, with over 376,000 total cases and over 28,000 deaths as of August 2020 [6].

COVID-19-related symptoms are nonspecific, resembling common cold symptoms in immunocompetent individuals. According to the Centers for Disease Control and Prevention (CDC) [7], the list of common COVID-19 symptoms includes

fever, cough, and shortness of breath that may appear 2 to 14 days after exposure to SARS-CoV-2; other nonrespiratory symptoms are also frequent [8]. Whenever these symptoms appear with epidemiological evidence (ie, after close contact with an infected subject or after visiting an area with ongoing community spread), further clinical assessment is needed.

The real-time assessment of COVID-19-related symptoms, their spread, and testing capabilities in hospital settings requires the use of innovative tools. In this context, digital health technologies have great potential to improve surveillance and epidemic control, primarily through increased information coverage, faster acquisition and distribution of information, rapid case tracking, and improved proximity tracing [9-11]. Consequently, smartphone- and web-based health apps aimed at tracking COVID-19 are on the rise. Although digital tools can promote public health, they can be intrusive, erode individual freedoms, or leave vulnerable populations behind [12].

Here, we summarize the development of Hospital Epidemics Tracker (HEpiTracker) [13], a newly designed app to track COVID-19 and other epidemics in hospitals. We also describe the pilot study performed across different areas and phases of the outbreak. The goal of the app is to help already overwhelmed hospital staff to actively monitor and assess COVID-19 infections and compatible symptoms in a population of hospital workers. We provide the basic data of the app and descriptive statistics of the pilot study, which illustrate the applicability of HEpiTracker in practical settings.

## Methods

### Overview

On March 14, 2020, a multidisciplinary group of individuals with varied backgrounds held the first of many daily meetings to discuss, by means of a “think tank” approach, research avenues aimed at mitigating the impact of the COVID-19 crisis.

As part of the Active Monitoring And Determinants of Incident Infection of COVID-19 in a Hospital population (AMADIICH) initiative, this multidisciplinary group created a framework designed to collect large amounts of heterogeneous data regarding COVID-19 in hospital staff, from shoe-leather epidemiology to big data and biosensors [14-16]. One of the main priorities of the group was speed, and the tools were designed with the aim of being applied during the first wave of COVID-19, and any subsequent outbreaks. Ethics approval of the AMADIICH research protocol was granted by the University Hospital of la Princesa's ethics board on March 19, 2020 (Proceedings of the Standing Commission CEIm 02/20, registry number 4061). The study was registered on ClinicalTrials.gov with the identifier NCT04326400. Individual informed consent was a requirement of participation and was obtained on the first screen of the HEpiTracker app, with tick boxes to give or deny consent.

The standard process of reporting COVID-19-related symptoms differs by area and center, but typically starts with a phone call from the employee to the occupational health unit (OHU) of the center. The employee is then advised to self-isolate at home, where he/she receives a polymerase chain reaction (PCR) test. If the test is positive, he/she remains in home isolation. If the test is negative but there are symptoms, the employee remains in isolation and the test is repeated during the following days. Therefore, workers can only return to work once they do not have symptoms and have returned two consecutive negative PCR tests. The OHU should always have access to the status of all employees and is typically responsible for escalating the data. The purpose of the HEpiTracker app is to provide an easier, homogenous, and transparent way of tracking positive PCR results and symptoms. The tracking happens automatically and relieves the health manager from manually updating the aggregated information and calculating statistics. It can also provide the updated information to the workers themselves in a transparent manner.

We provide descriptive data obtained in the pilot study that illustrate the applicability of the app in practical settings. We would like to clarify that we do not intend to study the factors behind app adoption or the effect these types of tools have on infection rates. These, and other related issues, are beyond the scope of this article. What we do present is a working app that can help already overwhelmed hospital staff to actively monitor and assess COVID-19 infections and compatible symptoms in the hospital worker population.

### App Development Process

As mentioned above, a mobile app to help monitor the spread of COVID-19 within hospitals was conceived after a state of emergency and full lockdown were declared in Spain on March 14, 2020. Following initial discussions and ethical approval, a

stepwise approach was carried out by ASELICIS software developers [17] to create the first version of the new app within a week and then to enhance its functionalities regularly. After several iterations, a minimum set of variables to include in the HEpiTracker App were identified, including demographic and occupational data, symptoms, previous comorbidities, and lab testing variables (Table 1).

There was a feedback process from users within our scientific committee, which includes doctors, nurses, computer science specialists, mathematicians, physicists, and statisticians, but not patients themselves, although during the development of the app several authors became infected or were quarantined due to COVID-19. The app also included a self-assessment of overall health status based on an ordinal Likert scale from 0 to 10. HEpiTracker was made available for both Android and iOS operating systems at Google and Apple stores, respectively.

Once HEpiTracker was up and running, we designed a pilot study in real-world conditions to test the feasibility of the app. Specifically, we tested the app in several hospitals across regions with different incidence rates and undergoing different phases of the COVID-19 pandemic: Hospital Can Misses (Eivissa) from April 9, 2020; Hospital Lucus Augusti (Lugo) from April 10, 2020; Hospital Álvaro Cunqueiro (Vigo) from April 10, 2020; Hospital Institut Català d'Oncologia (ICO; l'Hospitalet, Badalona, Girona, Tarragona-Terres de l'Ebre) from April 8, 2020; Hospital de Alta Resolución Loja (Granada) from April 13, 2020; and Hospital Universitario de La Princesa (Madrid) from April 9, 2020.

Hospital staff in 5 Spanish autonomous communities (Andalusia, Balearics, Catalonia, Galicia, and Madrid) were invited to download the app on their smartphones [13], and to register their daily body temperature, COVID-19-compatible symptoms, and general health score, as well as any PCR or serological test results. All staff in the participating hospitals, namely doctors, nurses, technicians, administrative workers, wardens, cleaners, managers, cafeteria staff, security, and other occupations were invited to participate, with no exclusion criteria.

In addition to answering Yes/No for the presence of daily symptoms, participants self-assessed their overall health by means of a visual analog scale (VAS), and they disclosed whether they had a history (either of diagnosis or treatment) of rhinitis, allergy, or chronic obstructive pulmonary disease (COPD)/chronic bronchitis, as well as their smoking status. Further, participants manually entered their body temperature in degrees Celsius to one decimal. They were also invited to register the outcome and the date of any COVID-19 laboratory test (PCR, IgG, or IgM); these could have been performed routinely at their center, throughout the study by risk exposure, or as a result of the presence of symptoms or suspicion of having the disease (Figure 1).

**Table 1.** Variables included in the HEpiTracker App.

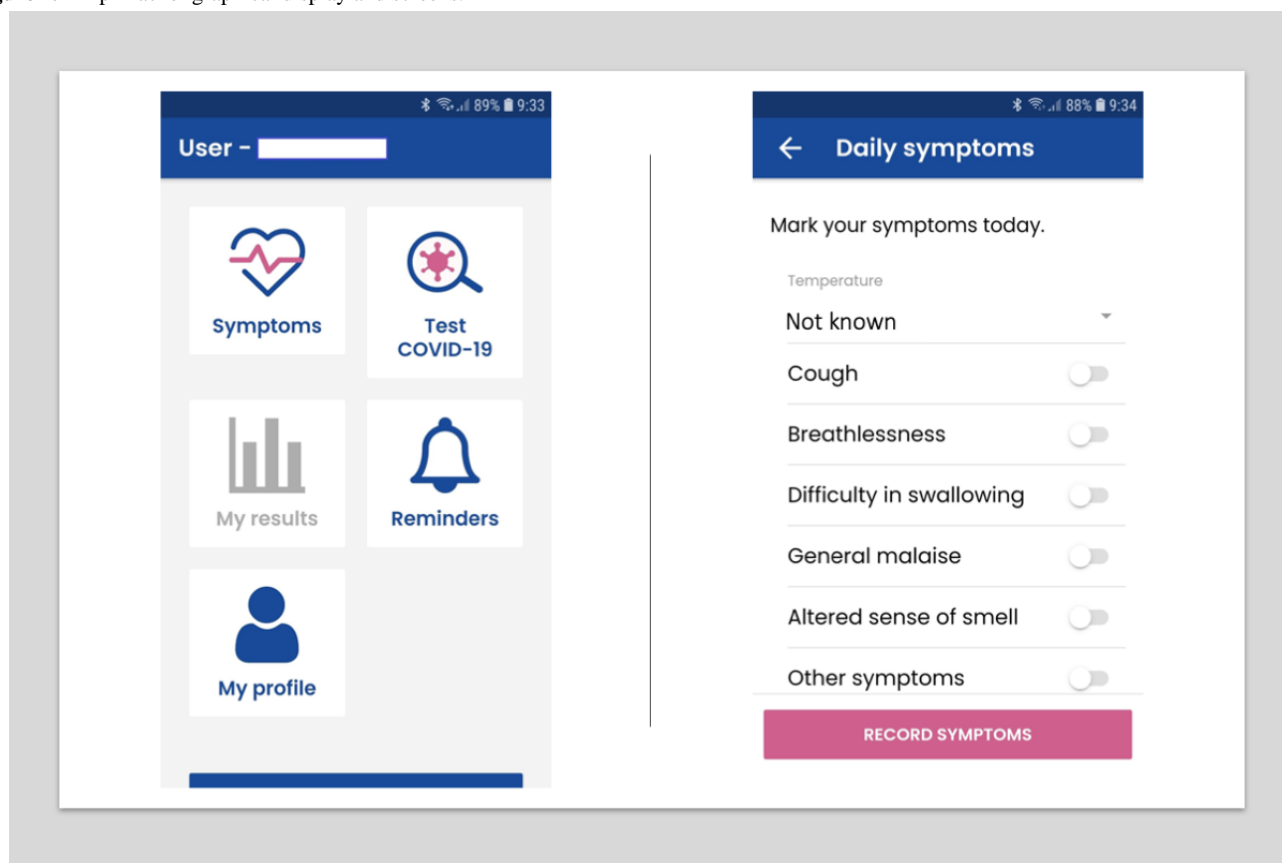
Type and variable	Values
<b>Demographic data</b>	
Personal ID	DNI/NIE <sup>a</sup> and email
Age (years)	18-122
Sex	Male/Female
<b>Occupational data</b>	
Current job category	Physician, nurse, technician, administrative, warden, cleaner, manager, cafeteria, security, other <sup>b</sup>
Department	Service <sup>c</sup>
<b>Symptoms</b>	
Body temperature	Degrees Celsius, reported to one decimal
Cough	Yes/No
Shortness of breath	Yes/No
Odynophagia or pain when swallowing	Yes/No
Malaise	Yes/No
Alterations of sense of smell	Yes/No
“My health today is...”	Visual analog scale from 0 to 10
<b>Previous comorbidities</b>	
Rhinitis	Yes/No
Asthma	Yes/No
Chronic bronchitis or chronic obstructive pulmonary disease	Yes/No
Smoker	Never/former/current
<b>Lab testing</b>	
COVID-19 test <sup>d</sup>	Positive or negative

<sup>a</sup>DNI: Documento nacional de identidad; NIE: Número de identificación de extranjero.

<sup>b</sup>“Other” category without text/alphanumericals.

<sup>c</sup>Departments/services include the following: Pathology, Cardiology, General and Digestive System Surgery, Oral and Maxillofacial Surgery, Plastic and Reconstructive Surgery, Medical-Surgical Dermatology and Venereology, Gastroenterology - Digestive System, Gynecology and Obstetrics, General Medicine, Nuclear Medicine, Preventive Medicine, Neurophysiology, Neurology, Ophthalmology, Medical Oncology, Radiation Oncology, Otorhinolaryngology, Pediatrics and Specific Areas Children's Health, Radiodiagnosis - Diagnostic Imaging, Traumatology and Orthopedic Surgery, Urology, Emergencies, restricted-COVID-19 area, quarantine area, isolation area.

<sup>d</sup>Information recorded includes the date and type of test: polymerase chain reaction, IgG, or IgM.

**Figure 1.** HEpiTracker graphical display and screens.

### Participant Withdrawal Criteria

A participant could withdraw from the study at any time (by simply not filling in their own information or by removing the app from their smartphone). However, given the ongoing public health emergency during this COVID-19 outbreak, it was agreed that any data already obtained would be kept for analysis and grouped tabulation. In addition, participants would be withdrawn at the discretion of the investigators if they failed to comply with the protocol procedures (eg, dummy data, relative of hospital staff, and other).

### Data Life Cycle

The first data entry was made by a user of the mobile app. The coding language is based on Ionic, which allows developers to create native apps with web coding such as HTML, CSS, and JavaScript. Users' initial data and subsequent symptom records are automatically transferred to an Odoo V11 Enterprise Edition server application [18]. The coding language is Python 3 on the back-end and JavaScript on the front-end. This first data transfer is carried out in encrypted form with an SSL certificate and a HTTPS protocol. In this server application, the data is processed and sent to the PostgreSQL database via an SSL certificate.

### Final Data Storage

The storage of data is done in a PostgreSQL database in an encrypted way. In addition, user data is stored anonymously with an internal code assigned to each participant. In this way, the user's identification number is related to the internal code, and all data entered is linked to it, preventing the end user

(principal investigator) from having access to the user's personal data.

### Backups

To guarantee the storage of data and avoid its loss or modification, a backup is made daily that is kept in three data centers (DCs) on three different continents, thus ensuring the integrity of the data in the event of any serious problem or inconvenience in any of the three DCs.

All individual participants' collected data were stored on secure ASELIS servers. Data were anonymized with a unique identifier by user and hospital. Statistics were performed by ISGlobal and IdIsBa with databases already anonymized over a PostgreSQL connection under a user and password requirement.

### Statistical Analysis

Study reports were sent to the participating hospitals. These reports included descriptive information regarding changes in the symptoms and incidence of COVID-19 infection by age group, sex, job category, and department/section. We followed the STROBE (Strengthening the Reporting of Observational Studies in Epidemiology) guidelines for reporting observational studies [19]. Continuous variables were expressed as mean and standard deviation, and categorical variables were expressed as number and percentage.

## Results

A total of 477 hospital staff participated in the study between April 8 and June 2, 2020 (Table 2).

Of note, both health-related (n=329) and non-health-related (n=148) professionals participated in the study. Overall participation by center was low; the highest participation rate of potential participants was 5.06% at Hospital Álvaro Cunqueiro (128 of 2529 potential participants), followed by a participation rate of 2.97% at ICO L'Hospitalet (20 of 674 potential participants). Most participants were female (67.7%), with a mean age of 45.4 years (SD 10.6). Regarding smoking habits, 13.0% and 34.2% of participants were current or former smokers, respectively (Table 2). Over two-thirds of participants (68.8%) were health workers (43.4% physicians and 25.4% nurses); however, the proportion of non-health workers by center ranged from 40% to 85%, and the distribution of job category by center was also highly variable. Participation was therefore lower for non-health workers, although we did obtain valuable data about them. Regarding comorbidities, participants reported being previously diagnosed with or currently in treatment for the following respiratory conditions: allergic rhinitis (25.4%), asthma (13.8%), and chronic bronchitis/COPD (1.0%).

The daily report of symptoms was highly variable across participants; overall, 2% to 6% of the source population in each hospital engaged with the app. Although we observed a decline in adherence after an initial participation peak in some hospitals, other sites were characterized by poor participation rates since inception and throughout the study period (Figure 2).

There were no major differences across hospitals in the distribution of respiratory comorbidities (asthma, rhinitis, and chronic bronchitis/COPD), smoking status, or symptoms, namely cough, shortness of breath, malaise, or anosmia (Table 3).

However, for temperature and overall health status scored from 0 to 10, there were subtle but not clinically significant differences. Finally, the percentage of positive PCR tests was highly variable, from 39% of participants at La Princesa (16/41 participants), to 20% at ICO Girona (2/10), 9.5% (16/169) at Álvaro Cunqueiro, 8.8% (6/68) at ICO L'Hospitalet, and 3.6% (4/116) at Lucus Augusti.

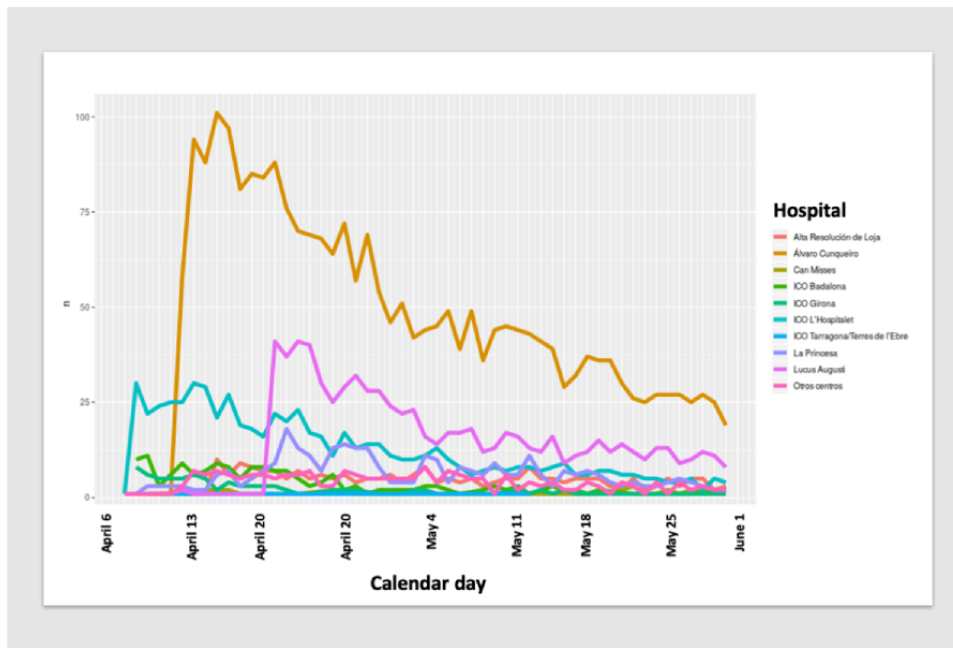
A daily summary display of these results was made available for circulation at all participating sites each morning during the study period (Figure 3).



**Table 2.** Demographic and clinical characteristics of 477 HEpiTracker users.

Characteristics	Value
Female, n (%)	323 (67.7)
Age (years), mean (SD)	45.4 (10.6)
<b>Hospital, n (%)</b>	
Hospital Can Misses (Eivissa)	11 (2.3)
Hospital Lucus Augustí (Lugo)	112 (23.5)
Hospital Álvaro Cunqueiro (Vigo)	169 (35.4)
Hospital Institut Català d'Oncologia	100 (21.0)
l'Hospitalet	68 (14.3)
Badalona	20 (4.2)
Girona	10 (2.1)
Tarragona-Terres de l'Ebre	2 (0.4)
Hospital de Alta Resolución de Loja (Granada)	20 (4.2)
Hospital Universitario de La Princesa (Madrid)	48 (8.6)
Other	24 (5.0)
<b>Job description, n (%)</b>	
Physician	207 (43.4)
Nurse	121 (25.4)
Technician	40 (8.4)
Administrative	38 (8.0)
Warden	12 (2.5)
Cleaner	7 (1.5)
Manager	6 (1.2)
Cafeteria	3 (0.8)
Security	1 (0.2)
Other	41 (8.6)
<b>Respiratory conditions, n (%)</b>	
Allergic rhinitis	121 (25.4)
Asthma	66 (13.8)
Chronic bronchitis or chronic obstructive pulmonary disease	5 (1.0)
<b>Smoking status, n (%)</b>	
Never smoker	252 (52.8)
Former smoker	163 (34.2)
Current smoker	62 (13.0)

**Figure 2.** Distribution of HEpiTracker coverage in each hospital by calendar day (April 8 to May 30, 2020) as of June 2, 2020. ICO: Institut Català d'Oncologia.



**Figure 3.** HEpiTracker results by hospital and by calendar day.





**Table 3.** Distribution of HEpiTracker variables by hospital.

Variables	Alta Resol de Loja (N=20)	Álvaro Cunqueiro (N=169)	Can Misses (N=11)	ICO <sup>a</sup> Badalona (N=20)	ICO Girona (N=10)	ICOL'Hospitalet (N=68)	ICO Tarragona (N=2)	La Princesa (N=41)	Lucus Augusti (N=112)	Other centers (N=24)
<b>Comorbidities, n (%)</b>										
Asthma	3 (15.0)	29 (17.2)	3 (27.3)	2 (10.0)	2 (20.0)	7 (10.3)	0 (0.00)	4 (9.76)	10 (8.93)	6 (25.0)
Rhinitis	4 (20.0)	52 (30.8)	6 (54.5)	3 (15.0)	1 (10.0)	12 (17.6)	1 (50.0)	11 (26.8)	23 (20.5)	8 (33.3)
Chronic bronchitis or COPD <sup>b</sup>	0 (0.00)	3 (1.78)	0 (0.00)	0 (0.00)	1 (10.0)	0 (0.00)	0 (0.00)	0 (0.00)	1 (0.89)	0 (0.00)
<b>Smoking, n (%)</b>										
Former	6 (30.0)	61 (36.1)	2 (18.2)	7 (35.0)	4 (40.0)	25 (36.8)	0 (0.0)	11 (26.8)	38 (33.9)	9 (37.5)
Never	7 (35.0)	87 (51.5)	9 (81.8)	12 (60.0)	6 (60.0)	36 (52.9)	2 (100)	28 (68.3)	56 (50.0)	9 (37.)
Current	7 (35.0)	21 (12.4)	0 (0.00)	1 (5.00)	0 (0.0)	7 (10.3)	0 (0.00)	2 (4.88)	18 (16.1)	6 (25.0)
<b>Symptoms, n (%)</b>										
Cough	0 (0.00)	14 (8.28)	0 (0.00)	2 (10.0)	1 (10.0)	6 (8.82)	0 (0.00)	4 (9.76)	3 (2.68)	4 (16.7)
Shortness of breath	0 (0.00)	2 (1.18)	0 (0.00)	1 (5.00)	0 (0.0)	3 (4.41)	0 (0.00)	2 (4.88)	0 (0.00)	2 (8.33)
Malaise	0 (0.00)	2 (1.18)	1 (9.09)	0 (0.00)	0 (0.0)	3 (4.41)	0 (0.00)	3 (7.32)	0 (0.00)	1 (4.17)
Anosmia	0 (0.00)	2 (1.18)	0 (0.00)	0 (0.00)	0 (0.0)	5 (7.35)	0 (0.00)	2 (4.88)	1 (0.89)	1 (4.17)
Temperature, mean (SD)	35.7 (0.58)	35.8 (0.58)	29.4 (14.5)	35.7 (0.67)	35.6 (0.53)	35.6 (0.67)	35.0 (0.00)	35.9 (0.78)	35.7 (0.65)	34.3 (7.33)
Overall health, mean (SD)	0.80 (2.28)	1.11 (2.31)	0.64 (1.80)	1.05 (2.31)	0.40 (0.84)	0.99 (1.59)	0.00 (0.00)	1.17 (2.23)	0.62 (1.47)	2.71 (3.01)

<sup>a</sup>ICO: Institut Català d'Oncologia.

<sup>b</sup>COPD: chronic obstructive pulmonary disease.

## Discussion

### Summary of Results

HEpiTracker is a newly designed mobile app aimed at monitoring the spread of COVID-19 symptoms and testing among professionals in hospital settings. Although the first wave of the pandemic in Spain and other countries is thought to be over, many experts warn that lockdown lifts might be premature [20]. In the current situation, the use of novel tools to measure and track the effects of the pandemic in real time may help tackle the forthcoming waves of the pandemic [4,6].

We tested the HEpiTracker app in a sample of 477 hospital staff including both health-related and non-health-related professionals from 9 centers in 5 regions of Spain experiencing different stages of the COVID-19 pandemic. The daily report of COVID-19-related symptoms was highly variable across participating hospitals, as well as the reported infection testing rates. We observed a decline in adherence after an initial participation peak in some hospitals, while other sites were characterized by low participation rates throughout the study period. It is worth noting that our pilot study aimed to test the technical aspects of the app in different real-world hospital settings, all in different stages of the COVID-19 pandemic, but not its deployment or coverage. In general, an acceptable response rate for any epidemiological study is 80% or higher for usability [21,22]. Having said that, the total workforce in

our 9 participating hospitals ranges from around 150 to over 3000 workers, which fluctuate seasonally and yearly. As reported, the overall response rate varied from 2% to 6% of the source population in each hospital in this study.

In future analyses, techniques and tools used in artificial intelligence and machine learning will be explored. For instance, machine learning can be used to forecast new cases or to identify relevant phenotypes [20].

### Discussion of Results and Work in the Field

Mobile apps are effective, valid tools for monitoring very diverse patterns in real-life conditions [23]. However, a key issue in mobile app-based monitoring involves increasing adherence and reinforcement for changing established behaviors. Our participation data show that adherence to the app should be improved, perhaps by providing some real-time feedback, composed of aggregated data from a given user's hospital and overall estimates, to the users. In response to the ongoing COVID-19 pandemic, several apps and digital health solutions have already been developed [24-26], as digital technology has the potential to improve surveillance and epidemic control. This is achieved primarily through increased information coverage, faster acquisition and distribution of information, rapid case tracking, and improved proximity tracing. In this context, some have already identified new opportunities to reshape current health care systems, including the widespread adoption of

electronic health records and the development of better mobile health apps and other disruptive technologies [10]. Indeed, digital health solutions are a promising asset to improve the quality of health care at a more sustainable cost. In a recent review, the uptake of and engagement with health and well-being smartphone apps was associated with capability, opportunity, and motivation [27].

It should be stressed that the present study did not intend to study the factors that determine app adoption or the impact of the app on infection rates. These, along with other relevant issues, are outside the scope of this paper and would only be addressed by a larger-scale study that would be complex in its design and execution. However, this pilot study allowed us to identify some strengths and limitations of the app that will be addressed in the following sections.

### Strengths and Potential of the Platform

Some strengths of HEpiTracker include novelty, flexibility, and the ability to quickly modify it and include new updates and information. Notably, the app is now available in several languages (Spanish, English, and Portuguese) and is accepted by both health care professionals and non-health care professionals in hospital settings. In the near future, we plan to design customized versions to be used in primary care, by security forces, and even in universities once in-class teaching is resumed.

### Limitations

However, our results must be interpreted in light of the following limitations. Despite fulfilling all European Union regulations and disclaimers on data protection, concerns with data privacy were raised by legal departments or individual managers in several nonparticipating hospitals, so clarity among leadership should be ensured. When evaluating usability and user experience of mobile health (mHealth) solutions, there are standardized questionnaires such as The Standardized User Experience Percentile Rank Questionnaire (SUPR-Qm) [28] for user experience and the mHealth App Usability Questionnaire (MAUQ) [29], which can aid the evaluation of apps; these can be used to prospectively assess HEpiTracker. However, the main limitation of the study was adherence to the app. In particular, we found it difficult to maintain participant engagement for weeks, especially when the local COVID-19 situation deescalated by the end of April/May 2020.

Unfortunately, the inclusion of alarm reminders for the daily recording of symptoms and temperature was not effective. Indeed, a proper communication and marketing strategy for wider implementation will be critical for its future use. We have already developed QR codes and templates of posters to pin in hospital entrances, elevators, and notice boards, which serve as a way to download HEpiTracker directly on any platform.

This lack of adherence, however inspired the next evolution of the app, consisting of an activity wristband that will incorporate HEpiTracker plus a number of other utilities. This evolution of HEpiTracker, named Epiwrist (an “epidemiologist on your wrist”), could passively monitor all HEpiTracker variables, as well as others. Epiwrist would include a gyroscope to assess hand-washing behavior (duration and frequency), synchronized

with a cough sensor to identify if the cough is directed to your sleeve (good) or your hand (bad), and a continuous heart rate monitor, oxygen saturation meter, and built-in thermometer. It is envisaged that Epiwrist will also measure physical activity, sleep duration and patterns, blood pressure, and respiratory rate. The development of this software and hardware started in May 2020; it was designed by engineers at Softlution [30]. Although the development of Epiwrist is envisaged and a first prototype has been manufactured in China, it will require time and effort to perform real-life testing and obtain approvals.

During the COVID-19 epidemic, OHUs in hospitals were in charge of diagnosing health care workers with symptoms of the disease, and applying and changing protocols from their respective public health institutions, which included the study of contacts within the hospital, affecting both hospitalized patients and staff. OHUs also reported the cases to the local epidemiological surveillance systems. Moreover, OHUs participated in the constant updating and implementation of internal protocols for COVID-19 prevention in collaboration with the preventive medicine units. In our study, some hospitals showed an unwillingness to participate because they believed that HEpiTracker would interfere with established tracking of health care providers and surveillance. Moreover, they claimed that it could affect the privacy rights of participants. In general, public health interventions during infectious outbreaks can be divided into those consisting of personal actions (eg, physical distancing, personal hygiene, and use of protective equipment), case and contact identification (eg, test-trace-track-isolate, reactive school or workplace closure), regulatory actions (eg, governmental limits on sizes of gatherings or business capacity; stay-at-home orders; proactive school, workplace, and public transport closure or restriction; cordon sanitaire or internal border closures), and international border measures (eg, border closure or enforced quarantine).

### Conclusions

A key priority during the ongoing COVID-19 pandemic is to identify the combination of measures that minimizes societal and economic disruption while adequately controlling infection [31]. Our aim with HEpiTracker was therefore focused on case and contact identification, namely test-trace-track-isolate within hospital staff, as they were becoming infected with COVID-19 disproportionately more frequently and severely than the general population. The significance and impact of mobile apps, including HEpiTracker, in helping to tackle COVID-19 should be assessed further with more research conducted by other groups in real conditions. As we are facing a new virus and disease [32], future directions and scenarios should be further assessed [33].

HEpiTracker is an already available tool to monitor COVID-19 and other epidemics in hospital workers. It has been tested in real conditions and might represent a stepping stone toward effective health policies in response to future waves of the pandemic. HEpiTracker is available in Spanish, Portuguese, and English and holds the potential to become a customized asset to be used in future COVID-19 pandemic waves and other environments.

## Acknowledgments

This project received unconditional help from Chiesi España SAU, which did not intervene in the collection of the data, the analysis or interpretation of the results, the writing of the manuscript, or in the decision to publish the results.

We thank all participants who contributed their data to the app, as well as their respective management teams. We sincerely thank all investigators who participated voluntarily, as no stipends were available, and identified its potential for helping society during and after the COVID-19 pandemic. We particularly thank Carlos Catalina and his team at ASELCIS Consulting for developing a first prototype of HEpiTracker within 48 hours, and for continuous, real-time upgrades to the app. HEpiTracker is available free of charge to all hospitals that require it, and is available in Spanish, Portuguese, and English. It is also being evaluated for its use in several universities in Spain, once in-class teaching restarts. Finally, we thank the JMIR Public Health and Surveillance blind reviewers for their suggestions and constructive criticism, which significantly improved our paper.

## Authors' Contributions

All authors declare that they participated in the conception and design of the work, the collection of data, or the analysis and interpretation of the data; participated in the writing or critical revision of the article; and gave approval of the final version for publication. JBS guarantees that all aspects that make up the manuscript have been reviewed and discussed with precision and integrity. Finally, JBS guarantees the accuracy, transparency, and integrity of the data and information contained in the study; that no relevant information has been omitted; and that all discrepancies between authors have been adequately resolved and described.

## Conflicts of Interest

None declared.

## References

1. Doroshov D, Podolsky S, Barr J. Biomedical Research in Times of Emergency: Lessons From History. *Annals of Internal Medicine* 2020 Aug 18;173(4):297-299. [doi: [10.7326/m20-2076](https://doi.org/10.7326/m20-2076)]
2. Black JRM, Bailey C, Przewrocka J, Dijkstra KK, Swanton C. COVID-19: the case for health-care worker screening to prevent hospital transmission. *The Lancet* 2020 May;395(10234):1418-1420. [doi: [10.1016/s0140-6736\(20\)30917-x](https://doi.org/10.1016/s0140-6736(20)30917-x)]
3. Zhao G. [Taking preventive measures immediately: evidence from China on COVID-19]. *Gac Sanit* 2020 May;34(3):217-219. [FREE Full text] [doi: [10.1016/j.gaceta.2020.03.002](https://doi.org/10.1016/j.gaceta.2020.03.002)] [Medline: [32265049](https://pubmed.ncbi.nlm.nih.gov/32265049/)]
4. World Health Organization. WHO coronavirus disease (COVID-19) pandemic. URL: <https://www.who.int/emergencies/diseases/novel-coronavirus-2019> [accessed 2020-08-20]
5. Mahase E. Covid-19: Medical leaders call for rapid review to prepare for second wave. *BMJ* 2020 Jun 24;369:m2529. [doi: [10.1136/bmj.m2529](https://doi.org/10.1136/bmj.m2529)] [Medline: [32580991](https://pubmed.ncbi.nlm.nih.gov/32580991/)]
6. Centro Nacional de Epidemiología. Situación y evolución de la pandemia de COVID-19 en España. COVID-19 en España. URL: <https://covid19.isciii.es> [accessed 2020-08-20]
7. Centers for Disease Control and Prevention. Symptoms of Coronavirus (COVID-19). URL: <https://www.cdc.gov/coronavirus/2019-ncov/downloads/COVID19-symptoms.pdf> [accessed 2020-08-20]
8. Munster VJ, Koopmans M, van Doremalen N, van Riel D, de Wit E. A Novel Coronavirus Emerging in China - Key Questions for Impact Assessment. *N Engl J Med* 2020 Feb 20;382(8):692-694. [doi: [10.1056/NEJMp2000929](https://doi.org/10.1056/NEJMp2000929)] [Medline: [31978293](https://pubmed.ncbi.nlm.nih.gov/31978293/)]
9. Valls J, Tobías A, Satorra P, Tebé C. [COVID19-Tracker: a shiny app to analyse data on SARS-CoV-2 epidemic in Spain]. *Gac Sanit* 2020 Apr 27. [FREE Full text] [doi: [10.1016/j.gaceta.2020.04.002](https://doi.org/10.1016/j.gaceta.2020.04.002)] [Medline: [32417117](https://pubmed.ncbi.nlm.nih.gov/32417117/)]
10. Pérez Sust P, Solans O, Fajardo JC, Medina Peralta M, Rodenas P, Gabaldà J, et al. Turning the Crisis Into an Opportunity: Digital Health Strategies Deployed During the COVID-19 Outbreak. *JMIR Public Health Surveill* 2020 May 04;6(2):e19106. [FREE Full text] [doi: [10.2196/19106](https://doi.org/10.2196/19106)] [Medline: [32339998](https://pubmed.ncbi.nlm.nih.gov/32339998/)]
11. Zamberg I, Manzano S, Posfay-Barbe K, Windisch O, Agoritsas T, Schiffer E. A Mobile Health Platform to Disseminate Validated Institutional Measurements During the COVID-19 Outbreak: Utilization-Focused Evaluation Study. *JMIR Public Health Surveill* 2020 Apr 14;6(2):e18668. [FREE Full text] [doi: [10.2196/18668](https://doi.org/10.2196/18668)] [Medline: [32250958](https://pubmed.ncbi.nlm.nih.gov/32250958/)]
12. Fagherazzi G, Goetzing C, Rashid MA, Aguayo GA, Huiart L. Digital Health Strategies to Fight COVID-19 Worldwide: Challenges, Recommendations, and a Call for Papers. *J Med Internet Res* 2020 Jun 16;22(6):e19284. [FREE Full text] [doi: [10.2196/19284](https://doi.org/10.2196/19284)] [Medline: [32501804](https://pubmed.ncbi.nlm.nih.gov/32501804/)]
13. HEpiTracker. HEpiTracker home site. URL: <https://www.hepitracker.com> [accessed 2020-08-20]
14. Koo D, Thacker SB. In snow's footsteps: Commentary on shoe-leather and applied epidemiology. *Am J Epidemiol* 2010 Oct 15;172(6):737-739. [doi: [10.1093/aje/kwq252](https://doi.org/10.1093/aje/kwq252)] [Medline: [20720100](https://pubmed.ncbi.nlm.nih.gov/20720100/)]
15. Tong SYC. Genomic polish for shoe-leather epidemiology. *Nat Rev Microbiol* 2013 Jan 3;11(1):8-8. [doi: [10.1038/nrmicro2935](https://doi.org/10.1038/nrmicro2935)] [Medline: [23202526](https://pubmed.ncbi.nlm.nih.gov/23202526/)]

16. Topol E. Deep Medicine: How Artificial Intelligence Can Make Healthcare Human Again. New York, NY, USA: Basic Books; 2018.
17. Aselsis Consulting. URL: [https://aselcis.com/en\\_US/](https://aselcis.com/en_US/) [accessed 2020-08-20]
18. Open Source ERP and CRM. ODOO. URL: <https://www.odoo.com/> [accessed 2020-08-20]
19. von Elm E, Altman DG, Egger M, Pocock SJ, Gøtzsche PC, Vandenbroucke JP. The Strengthening the Reporting of Observational Studies in Epidemiology (STROBE) statement: guidelines for reporting observational studies. *The Lancet* 2007 Oct;370(9596):1453-1457. [doi: [10.1016/S0140-6736\(07\)61602-X](https://doi.org/10.1016/S0140-6736(07)61602-X)]
20. Horton R. Offline: COVID-19 and the ethics of memory. *The Lancet* 2020 Jun;395(10239):1750 [FREE Full text] [doi: [10.1016/s0140-6736\(20\)31279-4](https://doi.org/10.1016/s0140-6736(20)31279-4)]
21. Fincham JE. Response rates and responsiveness for surveys, standards, and the Journal. *Am J Pharm Educ* 2008 May 15;72(2):43 [FREE Full text] [doi: [10.5688/aj720243](https://doi.org/10.5688/aj720243)] [Medline: [18483608](https://pubmed.ncbi.nlm.nih.gov/18483608/)]
22. Smith LH, VanderWeele TJ. Bounding Bias Due to Selection. *Epidemiology* 2019 Jul;30(4):509-516 [FREE Full text] [doi: [10.1097/EDE.0000000000001032](https://doi.org/10.1097/EDE.0000000000001032)] [Medline: [31033690](https://pubmed.ncbi.nlm.nih.gov/31033690/)]
23. Bort-Roig J, Puig-Ribera A, Contreras RS, Chirveches-Pérez E, Martori JC, Gilson ND, et al. Monitoring sedentary patterns in office employees: validity of an m-health tool (Walk@Work-App) for occupational health. *Gac Sanit* 2018 Nov;32(6):563-566 [FREE Full text] [doi: [10.1016/j.gaceta.2017.05.004](https://doi.org/10.1016/j.gaceta.2017.05.004)] [Medline: [28923337](https://pubmed.ncbi.nlm.nih.gov/28923337/)]
24. Vokinger KN, Nittas V, Witt CM, Fabrikant SI, von Wyl V. Digital health and the COVID-19 epidemic: an assessment framework for apps from an epidemiological and legal perspective. *Swiss Med Wkly* 2020 May 04;150:w20282 [FREE Full text] [doi: [10.4414/sm.w.2020.20282](https://doi.org/10.4414/sm.w.2020.20282)] [Medline: [32418194](https://pubmed.ncbi.nlm.nih.gov/32418194/)]
25. Schinköthe T, Gabri MR, Mitterer M, Gouveia P, Heinemann V, Harbeck N, et al. A Web- and App-Based Connected Care Solution for COVID-19 In- and Outpatient Care: Qualitative Study and Application Development. *JMIR Public Health Surveill* 2020 Jun 01;6(2):e19033 [FREE Full text] [doi: [10.2196/19033](https://doi.org/10.2196/19033)] [Medline: [32406855](https://pubmed.ncbi.nlm.nih.gov/32406855/)]
26. Zamberg I, Manzano S, Posfay-Barbe K, Windisch O, Agoritsas T, Schiffer E. A Mobile Health Platform to Disseminate Validated Institutional Measurements During the COVID-19 Outbreak: Utilization-Focused Evaluation Study. *JMIR Public Health Surveill* 2020 Apr 14;6(2):e18668 [FREE Full text] [doi: [10.2196/18668](https://doi.org/10.2196/18668)] [Medline: [32250958](https://pubmed.ncbi.nlm.nih.gov/32250958/)]
27. Szinay D, Jones A, Chadborn T, Brown J, Naughton F. Influences on the Uptake of and Engagement With Health and Well-Being Smartphone Apps: Systematic Review. *J Med Internet Res* 2020 Mar 23 [FREE Full text] [doi: [10.2196/17572](https://doi.org/10.2196/17572)] [Medline: [32348255](https://pubmed.ncbi.nlm.nih.gov/32348255/)]
28. Sauro J, Zarolia P. SUPR-Qm: A Questionnaire to Measure the Mobile App User Experience. *J Usability Stud* 2017 Nov;13:A [FREE Full text]
29. Zhou L, Bao J, Setiawan IMA, Saptono A, Parmanto B. The mHealth App Usability Questionnaire (MAUQ): Development and Validation Study. *JMIR mHealth uHealth* 2019 Apr 11;7(4):e11500 [FREE Full text] [doi: [10.2196/11500](https://doi.org/10.2196/11500)] [Medline: [30973342](https://pubmed.ncbi.nlm.nih.gov/30973342/)]
30. Softlution. URL: <http://softlution.com.au> [accessed 2020-08-20]
31. Wiersinga WJ, Rhodes A, Cheng AC, Peacock SJ, Prescott HC. Pathophysiology, Transmission, Diagnosis, and Treatment of Coronavirus Disease 2019 (COVID-19): A Review. *JAMA* 2020 Jul 10. [doi: [10.1001/jama.2020.12839](https://doi.org/10.1001/jama.2020.12839)] [Medline: [32648899](https://pubmed.ncbi.nlm.nih.gov/32648899/)]
32. Soriano JB. Humanistic Epidemiology: Love in the time of cholera, COVID-19 and other outbreaks. *Eur J Epidemiol* 2020 Apr 25;35(4):321-324 [FREE Full text] [doi: [10.1007/s10654-020-00639-y](https://doi.org/10.1007/s10654-020-00639-y)] [Medline: [32335765](https://pubmed.ncbi.nlm.nih.gov/32335765/)]
33. Gerli A, Centanni S, Miozzo M, Virchow J, Sotgiu G, Canonica G, et al. COVID-19 mortality rates in the European Union, Switzerland, and the UK: effect of timeliness, lockdown rigidity, and population density. *Minerva Med* 2020 Jul 02:2 [FREE Full text] [doi: [10.23736/S0026-4806.20.06702-6](https://doi.org/10.23736/S0026-4806.20.06702-6)] [Medline: [32491297](https://pubmed.ncbi.nlm.nih.gov/32491297/)]

## Abbreviations

**AMADIICH:** Active Monitoring And Determinants of Incident Infection of COVID-19 in a Hospital population  
**CDC:** Centers for Disease Control and Prevention  
**COPD:** chronic obstructive pulmonary disease  
**HEpiTracker:** Hospital Epidemics Tracker  
**ICO:** Institut Català d'Oncologia  
**mHealth:** mobile health  
**OHU:** occupational health unit  
**PCR:** polymerase chain reaction  
**VAS:** visual analog scale  
**WHO:** World Health Organization

*Edited by T Sanchez; submitted 21.06.20; peer-reviewed by I Zamberg, S Six, A Horner; comments to author 23.07.20; revised version received 29.07.20; accepted 21.08.20; published 21.09.20*

*Please cite as:*

*Soriano JB, Fernández E, de Astorza Á, Pérez de Llano LA, Fernández-Villar A, Carnicer-Pont D, Alcázar-Navarrete B, García A, Morales A, Lobo M, Maroto M, Ferreras E, Soriano C, Del Rio-Bermudez C, Vega-Piris L, Basagaña X, Muncunill J, Cosio BG, Lumbreras S, Catalina C, Alzaga JM, Gómez Quilón D, Valdivia CA, de Lara C, Ancochea J*

*Hospital Epidemics Tracker (HEpiTracker): Description and Pilot Study of a Mobile App to Track COVID-19 in Hospital Workers*  
*JMIR Public Health Surveill* 2020;6(3):e21653

URL: <http://publichealth.jmir.org/2020/3/e21653/>

doi: [10.2196/21653](https://doi.org/10.2196/21653)

PMID: [32845852](https://pubmed.ncbi.nlm.nih.gov/32845852/)

©Joan B Soriano, Esteve Fernández, Álvaro de Astorza, Luis A Pérez de Llano, Alberto Fernández-Villar, Dolores Carnicer-Pont, Bernardino Alcázar-Navarrete, Arturo García, Aurelio Morales, María Lobo, Marcos Maroto, Eloy Ferreras, Cecilia Soriano, Carlos Del Rio-Bermudez, Lorena Vega-Piris, Xavier Basagaña, Josep Muncunill, Borja G Cosio, Sara Lumbreras, Carlos Catalina, José María Alzaga, David Gómez Quilón, Carlos Alberto Valdivia, Celia de Lara, Julio Ancochea. Originally published in JMIR Public Health and Surveillance (<http://publichealth.jmir.org>), 21.09.2020. This is an open-access article distributed under the terms of the Creative Commons Attribution License (<https://creativecommons.org/licenses/by/4.0/>), which permits unrestricted use, distribution, and reproduction in any medium, provided the original work, first published in JMIR Public Health and Surveillance, is properly cited. The complete bibliographic information, a link to the original publication on <http://publichealth.jmir.org>, as well as this copyright and license information must be included.